

# A BOLD NEW MISSION

Instantly recognisable and one of Leicester's landmarks, the National Space Centre opened in 2001 ready to educate and inspire people of all ages. The centre is an educational charity specialising in space science and astronomy which sees in excess of 300,000 children and their families come through the doors each year.

Although the Centre was built at a time when a focus on accessibility was essential, the inclusion of a Changing Places facility was not incorporated into the initial design. Thanks to funding from the Leicester and Leicestershire Enterprise Partnership (LLEP) and the Foyle Foundation the team was able to add this much needed provision for current and new visitors.

RISE scope of works included full strip-out and demolition works; architectural and engineering drawings; timber partitioning and joinery; installing wall panelling, safety flooring and suspended ceiling; 1st and 2nd fix electrics and plumbing; painting; plus, the installation, testing and commissioning of all specialist equipment. We obtained building regs approval and provided specialist training to staff upon completion.



*“Changing Places are like keys that open the door to wonderful places like The National Space Centre. Our new facility isn’t just a toilet!”*

Graham Law — Chief Engineer



Left: Graphic feature wall designed by the NSC crew.  
Right: Guldmann GH3 ceiling track hoist system.

### The Project: Changing Places Toilet Adaption

The centre was purpose-built to house exhibits and the original design didn't leave much room for future additions. Chief Engineer, Graham Law explains:

“Once we had secured funding for a Changing Places toilet, we next had to figure out where we could put the toilet. We were short on space but needed the toilet to be accessible, easy to find and meet the minimum size required for Changing Places standards.”

### Enabling Future Generations Of Explorers

The National Space Centre had two main motivations for including a Changing Places loo within their centre. Enhancing existing accessibility, and, in the words of Graham, it's “just the right thing to do”.

Graham and the rest of the team are thrilled with the new facility and as lockdown restrictions ease, they now look forward to welcoming people back to discover the wonderful world of space and science;

RISE, eager to work with such a prestigious venue found a solution that involved demolishing the existing disabled loo to make way for a truly inclusive disabled bathroom complete with height adjustable adult-sized changing bench, hoist, and peninsula toilet.

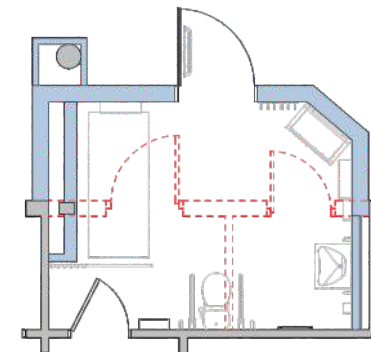
“Changing Places are like keys that open the door to wonderful places like The National Space Centre. Our new facility isn't just a toilet!”



Before & After:  
We didn't just install the equipment, we created the room itself – from the initial architectural design to Building Regs approval, and everything in between.



The new Changing Places facility is right at the heart of the centre and features a custom paint job to incorporate the loo into its surroundings and includes extra such as quirky door signs and a custom feature wall graphics. “Adapting the space we already had was a very good compromise,” says Graham, “looking at it now, you wouldn't know it hasn't always been there, which is always a sign that you've got it right.”



New Floorplan:  
RISE also provided all demolition works and structural amends to form the new CP room.

RISE quickly completed all building works, including equipment installation, during the April 2021 lockdown.

For further information about Changing Places or to schedule a free consultation, please call **07729 224 738** or email **hello@riseadapt.co.uk**